

**DAIHAN-brand® High-performance Dry Bath-Heating & Cooling, "HB-R", -5°C~95°C, ±0.1°C with Digital PID Control, Acrylic Lid, Precise Temperature Control, Modular Blocks, Anodized Aluminum Block**

히팅 / 쿨링 블록, 블록 교체 가능, 아크릴 리드 포함, Peltier Cooling System, Digital Timer & PID Control System, Interchangeable Blocks



Heat/Cool Package-Set "HB-R48-Set" with Block "BLC548" for 1.5/2ml Centrifuge Tube × 48 holes

- with Certificate & Traceability : Controlled by Serial Number, Certificate, Delivery-information, and Traceable Data Base System
- Designed for Multi-Function : Enzyme Reactions, Inactivation of Sera, Incubation and Other Laboratory Procedures.
- **Patented Jog-Shuttle Control System** and Digital LCD with Back-Light Function
- CE Certified                      ■ **PL(Product Liability) Insurance**

\* User Self-Compensation Function to offset between Actual and Displayed Temperature. (±10.0°C)  
 \* Storage Function of Temperature and Timer setting values  
 \* Locking Mode Supported for Experimental Safety (Input to Jog-Shuttle can be Disabled)

**Specification**

Model		Heat/Cool Package-Set "HB-R48-Set"
Capacity (1.5/2ml Tube)		48 holes × 1.5/2ml Centri. Tubes
Dimension : Unit & Block		185 × 230 × h220mm, and 90 × 120 × h60mm
Cooling		Two Peltier Modules
Cool-Down Speed		2.3°C/min. between 95°C to 25°C, 0.5°C/min. between 25°C to -5°C
Heater and Sensor		300W (Molded Heater), PT100
Temp. Range, & Accuracy		-5°C to 95°C, and ±0.1°C at 37°C, ±0.2°C at 90°C
Heat-Up Speed		Approx. 5°C/min
Safety Device		Over Temp. and Over Current Protector, Sensor Error Detector
Timer with Alarm		99hr 59min, Alarm (Error Status and Timer - end)
Display		Digital LCD with Back-Light Function
Controller		Digital PID Controller
Material	Internal & External	Stainless steel (# 304), and Powder Coated steel
	Block	Anodized Aluminum
Included Standard Acce.		Block "BLC548" for 1.5/2ml Tubes, and Block Tongs "BLE101"
Packing Size, Gross Weight		350 × 220 × h310mm, 9 kg
Power Consumption		450 W
Power Supply & Cord Plug *		1 Phase, AC 120V, 60Hz or AC 230V, 50 / 60Hz

\* Other Specifications are available upon Customer's Request.

**Included Block in the Package-Set**



(3) "BLC548"  
1.5/2ml Centrifuge Tube × 48 holes

**Ordering Information**

**Dry Bath-Heating & Cooling Package-Set, with 1.5/2ml Block**

		Ea. Price, ₩
DH.WHB00249	Dry Bath, Heat/ Cool, "HB-R48-Set", 230V, with 1.5/2ml Block	881,620
DH.WHB02249	, 120V, with 1.5/2ml Block	881,620

**Dry Bath-Heating & Cooling Unit Only, without Block**

		Ea. Price, ₩
DH.WHB00248	Dry Bath, Heat/ Cool, "HB-R48-Unit", 230V, without Block	737,500
DH.WHB02248	, 120V, without Block	737,500

**Optional Interchangeable Blocks**

		Ea. Price, ₩
DH.WHB510596	(1) Block, "BLC596", for 0.2ml PCR Tube, 96 holes	200,140
DH.WHB510570	(2) Block, "BLC570", for 0.5ml Centrifuge Tube × 63 holes	170,140
DH.WHB511548	(3) , "BLC548", for 1.5/2ml Centrifuge Tube × 48 holes	160,140
DH.WHB521248	(4) Block, "BLT248", for φ 12mm Test Tube, 48 holes	160,140
DH.WHB521335	(5) , "BLT335", for φ 13mm Test Tube, 30 holes	160,140
DH.WHB521535	(6) , "BLT535", for φ 15mm Test Tube, 30 holes	160,140
DH.WHB521628	(7) , "BLT628", for φ 16.5mm Test Tube, 24 holes	156,140
DH.WHB521828	(8) , "BLT828", for φ 18mm Test Tube, 24 holes	156,140
DH.WHB531515	(9) Block, "BLC515", for 15ml Conical Tube, 15 holes	150,140
DH.WHB535008	(10) , "BLC008", for 50ml Conical Tube, 8 holes	150,140

DH.WHB500101	Spare Block Extraction Tongs, "BLE101"	20,140
--------------	--	--------

**Validation (IQ, OQ) Service**



DH.WHB30248	Validation Service(IQ, OQ), "DBVR248", for "HB-R48"	문의요함
-------------	---	------

<다음 Page에 계속>

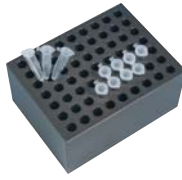
Cat. No	Description	Articles
---------	-------------	----------

앞 페이지 <DAIHAN-brand® High-performance Dry Bath-Heating & Cooling, “HB-R” 에서 계속... >

### The Details of 10 Optional Blocks



**(1) “BLC596”**  
0.2ml PCR Tube × 96 holes



**(2) “BLC570”**  
0.5ml Centrifuge Tube × 63 holes



**(3) “BLC548”**  
1.5/2ml Centrifuge Tube × 48 holes  
Included in the Package-Set



**(4) “BLT248”**  
φ 12mm Tube × 48 holes



**(5) “BLT335”**  
φ 13mm Tube × 30 holes



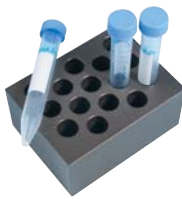
**(6) “BLT535”**  
φ 15mm Tube × 30 holes



**(7) “BLT628”**  
φ 16.5mm Tube × 24 holes



**(8) “BLT828”**  
φ 18mm Tube × 24 holes



**(9) “BLC515”**  
15ml Conical Tube × 15 holes



**(10) “BLC008”**  
50ml Conical Tube × 8 holes