

“DAIHAN” WiseCircu® WCB Digital Precise Circulation Water Bath, 6-/11-/22- Lit.
 with 1×Stainless Steel Flat Lid, Digital Fuzzy Control System, Powerful Circulation Pump, up to 100°C, ±0.1°C, 5 Lit./min
 정밀 항온 순환 수조, 디지털 퍼지 제어 시스템, 고성능 순환 펌프, Stainless Steel Flat Lid 포함



Digital Precise Circulation Water Bath “WCB-22”

- Digital Fuzzy Control System Implementing Superior Temperature Accuracy
- Patented Jog-Shuttle Control System and Digital LCD Display with Back-Light Function
- CE Certified ■ PL(Product Liability) Insurance

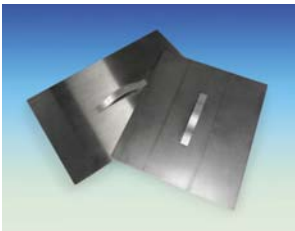
- * Ideal for Biotechnology, Clinical, Environmental, Medical, Petroleum, Food Industry, Pharmaceutical and Industrial Applications.
- * Warning and Automatic Stop Function in case of Liquid Shortage.
- * User's Self-Compensation Function to Control Difference between Real Temp. and Indicated Temp. (±10.0°C).
- * Powerful Circulation Pump Assures Temp. Uniformity. Internal and External Circulation.
- * 304 Stainless Steel Bath & Lid for Superior Durability & High Thermal Efficiency/Constant.
- * Connection with Evaporators and Viscometers is applicable.
- * Storage Function for the Set Values of Temperature and Timer.
- * Alarm function : Error Status and Timer-end.
- * Locking Mode Supported for Experimental Safety (Input to Jog-Shuttle can be Disabled).

Specification

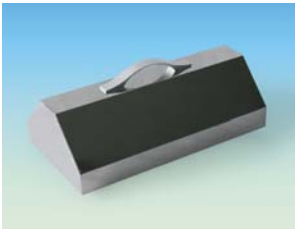
Capacity & Models	6 Lit. “WCB-6”	11 Lit. “WCB-11”	22 Lit. “WCB-22”	
Temp. Range & Accuracy	Ambient + 5°C ~ 100°C, ±0.1°C			
Temp. Resolution	0.1°C – Display, 0.1°C – Control			
Temp. Uniformity & Probe	±0.2°C, PT100			
Heating Power	800 W	1 kW	2 kW	
Pump	5 Lit. / min (Internal / External)			
Circulation Nozzle	i.d. 7×o.d. 11 mm (i.d. 9/ o.d. 12mm silicon tube connected for inner circulation)			
Timer & Alarm	99hr 59min (Delay & Continuous run), Error status & Timer-end			
Display	Digital LCD Display with Back-Light Function			
Controller	Digital Fuzzy Controller with Jog - Shuttle Switch (Turn + Push)			
Safety Circuit	Over-Temp./-Current protection, Sensor Error & Low Level Detection			
Material	Stainless Steel (# 304)-Internal, Powder Coated Steel-External			
Lid	included Stainless Steel Flat Lid, Optional Dome Lid			
Drain Valve	None		Mounted(φ9.5-11mm)	
Dimension (w × d × h)	Effective Space	120×155×h150 mm	170×240×h150 mm	372×295×h150 mm
	Internal	300×155×h150 mm	302×240×h150 mm	500×295×h150 mm
	External	330×185×h385 mm	335×275×h385 mm	540×335×h410 mm
Packing Size (mm) and Gross Weight (kg)	350×210×h410mm, 11 kg	360×300×h420mm, 13 kg	580×380×h470mm, 18 kg	
Power Supply*	1 Phase, AC 120 V, 60 Hz or AC 230 V, 50 / 60 Hz			

* Other Specifications are available upon Customer's Request.

※ 운임 약 ₩ 9,000 별도!



(1) Flat Lid, Stainless Steel (Included)



(2) Dome Lid, Stainless Steel (Optional)



(3) “WCP30” 3P Plug and Socket Set

Ordering Information

DH.WCB00106	Circulation Water Bath, 230V, 6 Lit., “WCB-6”, with Cord/Plug	684,750
DH.WCB00111	, 11 Lit., “WCB-11”, with Cord/Plug	698,580
DH.WCB00122	, 22 Lit., “WCB-22”, with Cord/Plug	800,220
DH.WCB00206	Circulation Water Bath, 120V, 6 Lit., “WCB-6”, with Cord/Plug	684,750
DH.WCB00211	, 11 Lit., “WCB-11”, with Cord/Plug	698,580
DH.WCB00222	, 22 Lit., “WCB-22”, with Cable	800,220

Spare Flat Lid, Stainless Steel

DH.WCB10106	(1) Flat Lid, for 6 Lit., w134×d180mm, “CBF106”	67,920
DH.WCB10111	, for 11 Lit., w186×d273mm, “CBF111”	70,530
DH.WCB10122	, for 22 Lit., w391×d333mm, “CBF122”	72,300

Optional Dome Lid, Stainless Steel

DH.WCB20106	(2) Dome Lid, for 6 Lit., 132×182×h121mm, “CBD106”	94,830
DH.WCB20111	, for 11 Lit., 184×274×h121mm, “CBD111”	104,830
DH.WCB20122	, for 22 Lit., 389×334×h121mm, “CBD122”	124,830
DH.WCP30030	(3) 3P Plug and Socket Set, for 1 Phase Cable, “WCP30”	24,740

Validation (IQ, OQ) Service

DH.WCB30106	Validation Service(IQ, OQ), “CBV106”, for “WCB-6”	문의요함
DH.WCB30111	, “CBV111”, for “WCB-11”	문의요함
DH.WCB30122	, “CBV122”, for “WCB-22”	문의요함