

Model S2

Sequencing Gel Electrophoresis System

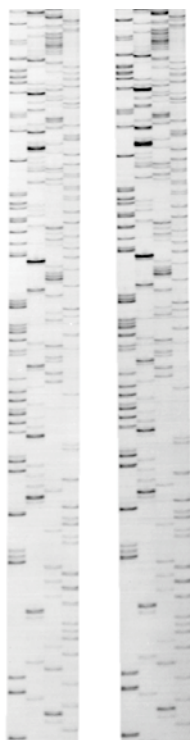
- Produces a 30 cm x 40 cm gel that fits easily on a standard 14 in x 17 in X-ray film
- Integral aluminum plate for even heat distribution to minimise band curvation (“smiling”)
- Removable lower buffer tray with a separate chamber for collecting the buffer from the upper reservoir, eliminating the need to move the apparatus for buffer disposal
- Built-in integral clamps hold the gel in place
- Unique gasket sealing system ensures leak-free operation without grease or notched plates
- Safety interlock lids
- Additional combs and apparatus components available separately

The Model S2 Sequencing Gel Electrophoresis Apparatus is designed for vertical polyacrylamide gel separations of oligo- and polynucleotides, nucleic acid sequencing, genotyping and polymorphic studies.



Model	Apparatus dimensions (W x D x H)	Gel dimensions (W x H)
S2	42.2 cm x 21.6 cm x 44.5 cm	31.0 cm x 38.5 cm

Working buffer volume: 1 L



DNA sequence analysis performed on the Model S2 System.
8 % polyacrylamide/8.3 M urea gel Tris-borate-EDTA buffer electrophoresed at 1.5 kV for 2.5 h.

Item	Order No.
Model S2 Complete with power cords, four 14 cm 0.4 mm vinyl sharktooth combs, set of 0.4 mm thick vinyl side spacers; pair of glass plates, roll of gel sealing tape; surface temperature monitor	21105036

Ordering Information for Accessories

➤ see page 91 – 92



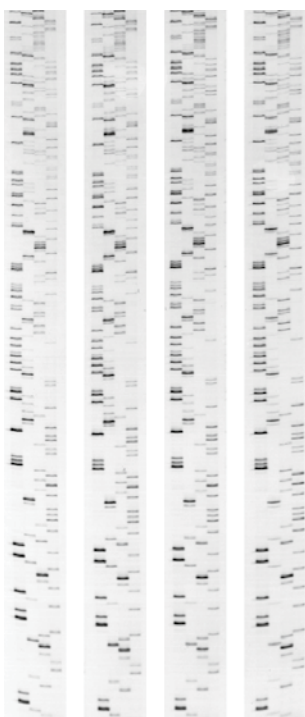
Model SA

Adjustable Sequencing Gel Electrophoresis System

- Snap-action section clamps allow quick and easy adjusting of the height
- Adjustable levelling feet and built-in levelling indicator ensure consistent and reproducible results
- Integral aluminium plate for even heat distribution to minimise "smiling"
- Removable lower buffer tray with a separate chamber for collecting the buffer from the upper reservoir eliminating the need to move the apparatus for buffer disposal
- Built-in integral clamps hold the gel in place
- Unique gasket sealing system ensures leak-free operation
- Safety interlock lids
- Combs and apparatus components available



The Model SA sequencing apparatus is designed for the separation of oligonucleotides, polynucleotides and nucleic acid sequences in vertical polyacrylamide gels. With optional extensions the unit can easily be adjusted to three different heights: 32 cm, 43 cm or 60 cm.



DNA sequence analysis performed on the Model SA-60 System.
GEL-MIX 6,6 % SDS-polyacrylamide gel
Tris-borate-EDTA buffer electrophoresed at 55 W
constant power (2.3 to 2.7 kV) for 3 h.

Model	Apparatus dimensions (W x D x H)	Gel dimensions (W x H)
SA-32	29 cm x 22 cm x 41 cm	17 cm x 32 cm

Working buffer volume: 500 ml

Item	Order No.
Model SA-32 Complete with top and base sections, power cords; two 14 cm vinyl sharktooth combs; set of 0.4 mm thick spacers; pair of glass plates; roll of gel sealing tape; surface temperature monitor.	31096019 (USA) 31096027 (EU)
Gel Casting Clamp	31096324

Ordering Information for Accessories

➤ see page 91 – 92

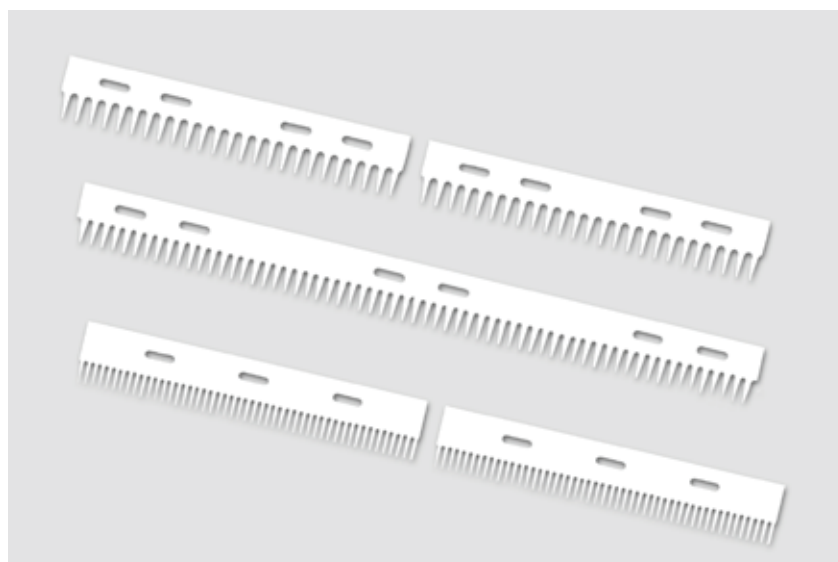


Combs for Sequencing Apparatus

Shark Tooth Combs

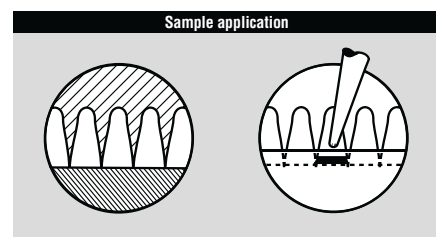
- The teeth form barriers between adjacent lanes for sample loading
- Reduced risk of torn or deformed wells cause by square-toothed combs
- The minimal space between lanes facilitates accurate reading of sequences
- Generate flatter, more uniform loading surface than square-toothed combs

Shark tooth combs are ideally suited for facilitating the analysis of sequencing reactions. They are designed for use with all sequencing apparatus models (S2, S2001 and SA). In addition, the combs can be used with all other systems with 0.4 mm spacers.



Square tooth combs for model S2001 and S2

Number of wells	Comb thickness	Volume/well	Order No.
16	0.4 mm	25 μ l	21035043
20	0.4 mm	19 μ l	21035076
20	0.8 mm	38 μ l	21035084
20	1.6 mm	76 μ l	21035092
32	0.4 mm	10 μ l	21035100
32	0.8 mm	20 μ l	21035118



Shark tooth combs for all models

Comb length	Comb thickness	Number of teeth	Volume/well	Pcs./Pckg.	Order No.
14 cm	0.4 mm	25	2 – 4 μ l	6	21045018
28 cm	0.4 mm	50	2 – 4 μ l	2	21046016
14 cm	0.4 mm	49	1 – 2 μ l	4	21045026
14 cm	0.19 mm	25	2 – 4 μ l	6	21105317
14 cm	0.35 mm	25	2 – 4 μ l	6	21105341
28 cm	0.35 mm	62	2 – 4 μ l	2	21035134

Combs for Sequencing Apparatus

Order Information

Square tooth combs for model SA

Number of wells	Comb thickness	Volume/well	Order No.
3	0.8 mm	480* µl	11092020
12	1.6 mm	60 µl	11092087
18	0.8 mm	16 µl	11092103

* Central, preparative well

Accessories

Item	Dimensions	Content	Order No.
Spacer set for Model S2001/S2	0.35 mm	2 Spacer, 12 End blocks	21105366
Spacer set for Model S2001/S2	0.4 mm	2 Spacer, 12 End blocks	21108014
Spacer set for Model S2001/S2	0.8 mm	2 Spacer, 12 End blocks	31109010
Spacer set for Model S2001/S2	1.6 mm	2 Spacer, 12 End blocks	31109028
Spacer set for Model SA-32	0,8 mm	2 Spacer	21093059
Spacer set for Model SA-32	1,6 mm	2 Spacer	21093075
Wedge spacer for Model S2001/S2	0.4 – 1.2 mm	2 Spacer	21107016
Wedge spacer for Model SA-32	0.4 – 1.2 mm	2 Spacer	21093083
End spacer for Model S2001/S2	0.4 mm	1 Spacer	21105077
End spacer for Model S2001/S2	0.8 mm	1 Spacer	21105069
End spacer for Model S2001/S2	1.2 mm	1 Spacer	21105325
End spacer for Model S2001/S2	1.6 mm	1 Spacer	21105051
Spacer silicone blocks		12 Pieces	21105382
Glass plate set for S2001/S2	33 cm x 39 cm	2 Plates	11034014
Glass plate set for SA-32	19.7 cm x 33.8 cm	2 Plates	21093067
Gel casting clamp for SA-32		1 Piece	31096324
Gel sealing tape		1 Roll	11032018
Gasket silicone grey		1 Piece	21105358
Sealing for buffer chamber SA		1 Piece	21093034
Clamps for gel sandwich		12 Pieces	11098019

